

BASIC DETAILS

13121--JAWAHAR NAVODAYA VIDYALAYA SAPUTARA DANG GUJ

Dated : 02/12/2016

SCHOOL NAME	JAWAHAR NAVODAYA VIDYALAYA SAPUTARA DANG GUJ	SCHOOL CODE	13121
ADDRESS	JAWAHAR NAVODAYA VIDYALAYA,SAPUTARA BEIND RUTUMBHARA VIDYALAYA,AT & PO SAPUTARA	AFFILIATION CODE	440019
PRINCIPAL	MR NINU SOPAN RANE	PRINCIPAL'S CONTACT NUMBER	7698213636
PRINCIPAL'S EMAIL ID	ninusrane@gmail.com	PRINCIPAL'S RETIREMENT DATE	31/03/2025
SCHOOL'S CONTACT NUMBER	2631-237280	SCHOOL'S EMAIL ID	jnvsaputara@gmail.com
SCHOOL'S WEBSITE	www.jnvdang.org	SCHOOL'S FAX NUMBER	02631237280
LANDMARK NEAR SCHOOL	BEHIND RUTUMBHARA GIRLS SCHOOL	YEAR OF ESTABLISHMENT	2008
AFFILIATION VALIDITY	2016 TO 2021	AFFILIATION STATUS	REGULAR
NAME OF THE TRUST/SOCIETY /COMPANY REGISTERED WITH	NAVODAYA VIDYALAY SAMITI	REGISTRATION DATE	28/02/1986
SOCIETY REGISTRATION NUMBER	S10428	REGISTRATION VALIDITY	PERMANENT REGISTRATION
NOC ISSUING AUTHORITY	NAVODAYA VIDYALAYA SAMITI	NOC ISSUING DATE	07/03/2003

FACULTY DETAILS

13121--JAWAHAR NAVODAYA VIDYALAYA SAPUTARA DANG GUJ

Dated : 06/12/2016

TOTAL NUMBER OF TEACHERS (ALL CLASSES)	13	NUMBER OF PGTs	6
NUMBER OF TGTs	7	NUMBER OF PRTs	0
NUMBER OF PETs	2	OTHER NON-TEACHING STAFF	7
NUMBER OF MANDATORY TRAINING QUALIFIED TEACHERS	10	NUMBER OF TRAININGS ATTENDED BY FACULTY SINCE LAST YEAR	2

STUDENT DETAILS

13121--JAWAHAR NAVODAYA VIDYALAYA SAPUTARA DANG GUJ

Dated : 06/12/2016

CLASS	TOTAL NUMBER OF SECTIONS	TOTAL NUMBER OF INTAKE	TOTAL NUMBER OF STUDENTS
1	0	0	0
2	0	0	0
3	0	0	0
4	0	0	0
5	0	0	0
6	2	80	64
7	2	80	50
8	2	80	61
9	2	80	52
10	2	80	56
11	1	40	37
12	1	40	13

ACADEMIC DETAILS

13121--JAWAHAR NAVODAYA VIDYALAYA SAPUTARA DANG GUJ

Dated : 06/12/2016

SUBJECTS OFFERED FOR CLASS 10	SUBJECTS OFFERED FOR CLASS 12
010---GUJARATI 041---MATHEMATICS 086---SCIENCE 087---SOCIAL SCIENCE 184---ENGLISH LNG & LIT.	030---ECONOMICS 054---BUSINESS STUDIES 055---ACCOUNTANCY 301---ENGLISH CORE 302---HINDI CORE

INFRASTRUCTURE DETAILS

13121--JAWAHAR NAVODAYA VIDYALAYA SAPUTARA DANG GUJ

Dated : 06/12/2016

TOTAL NUMBER OF SITES OF SCHOOL	1	TOTAL NUMBER OF BUILDING BLOCKS	3
TOTAL AREA OF SCHOOL IN SQUARE METRES	28328	TOTAL NUMBER OF PLAYGROUNDS	1
TOTAL AREA OF PLAYGROUND IN SQUARE METRES	2500	TOTAL NUMBER OF ROOMS	11
TOTAL NUMBER OF SMALL-SIZED ROOMS	0	TOTAL NUMBER OF MEDIUM-SIZED ROOMS	7
TOTAL NUMBER OF LARGE-SIZED ROOMS	4	TOTAL NUMBER OF MALE REST ROOM	0
TOTAL NUMBER OF FEMALE REST ROOM	0	NUMBER OF GIRLS' TOILET	8
NUMBER OF BOYS' TOILET	8	NUMBER OF TOILETS FOR DIFFERENTLY ABLED PERSONS	0
NUMBER OF WASHROOMS FOR FEMALE STAFF	8	NUMBER OF WASHROOMS FOR MALE STAFF	8
TOTAL NUMBER OF LIBRARIES	1	NUMBER OF LABORATORIES	3
TOTAL NUMBER OF STUDENT CANTEENS	0	TOTAL NUMBER OF STAFF CANTEENS	0
NUMBER OF WATER PURIFIERS/ROs	2	NUMBER OF AUDITORIUMS	0
NUMBER OF LIFTS/ELEVATORS	0	NUMBER OF DIGITAL CLASSROOMS	1
DOES THE SCHOOL HAS HOSTEL FACILITY	YES	DOES THE SCHOOL HAS GUARDS EMPLOYED FOR SAFETY	YES
DOES THE SCHOOL HAS FIRE EXTINGUISHERS	YES	DOES THE SCHOOL HAS SPRINKLERS	NO
DOES THE SCHOOL HAS CCTV CAMERAS INSTALLED?	NO	IS THE SCHOOL EXAMINATION CENTER OF CBSE?	YES
TOTAL NUMBER OF COMPUTERS IN ALL COMPUTER LAB	45	DOES THE SCHOOL HAS WEB SERVERS	NO
DOES THE SCHOOL HAS A BOUNDARY WALL?	YES	IS YOUR SCHOOL BARRIER FREE/ HAS RAMPS?	NO
DOES THE SCHOOL HAS CLINIC FACILITY?	YES	DOES THE SCHOOL HAS A STRONG ROOM?	NO
DOES THE SCHOOL HAS A GYMNASIUM?	YES	IS YOUR SCHOOL WI-FI ENABLED?	YES
PROVISION OF WEB BASED LEARNING PROGRAMS?	YES	DOES THE SCHOOL HAS FIRE ALARMS?	NO
DOES THE SCHOOL HAS SPORTS FACILITY?	YES	DOES THE SCHOOL HAS INDOOR GAMES FACILITY?	YES

DOES THE SCHOOL HAS A SWIMMING POOL?	NO	DOES THE SCHOOL HAS DANCE/MUSIC FACILITY?	YES
TOTAL NUMBER OF BUSES OWNED	0	TOTAL NUMBER OF BUSES HIRED	0
TOTAL NUMBER OF VANS/MATADORS	0	TOTAL NUMBER OF DRIVERS	0
NUMBER OF FEMALE ATTENDANTS FOR BUS DUTY	0	NUMBER OF ACTIVITY ROOMS	0
NAME OF TRANSPORT COORDINATOR	NA	TRANSPORT COORDINATOR CONTACT	0

LOCATION DETAILS

13121--JAWAHAR NAVODAYA VIDYALAYA SAPUTARA DANG GUJ

Dated : 06/12/2016

NEAREST NATIONALISED BANK	STATE BANK OF INDIA	DISTANCE OF BANK FROM SCHOOL IN KM	12
NEAREST BUS STATION	SAPUTARA	DISTANCE OF BUS TERMINAL FROM SCHOOL IN KM	3
NEAREST RAILWAY STATION	NASHIK	DISTANCE OF RAILWAY STATION FROM SCHOOL IN KM	90
NEAREST AIRPORT	SURAT	DISTANCE OF AIRPORT FROM SCHOOL IN KM	150
NEAREST HOSPITAL	PHC SAPUTARA	DISTANCE OF HOSPITAL FROM SCHOOL IN KM	3
NEAREST POLICE STATION	SAPUTARA	DISTANCE OF POLICE STATION FROM SCHOOL IN KM	3
NEAREST METRO STATION		DISTANCE OF METRO FROM SCHOOL IN KM	

OTHER VITAL INFORMATION

13121--JAWAHAR NAVODAYA VIDYALAYA SAPUTARA DANG GUJ

Dated : 15/12/2016

10th BOARD PASS PERCENTAGE (2014/2015/2016)	100/100/100	12th BOARD PASS PERCENTAGE (2014/2015 /2016)	100/93.93/80.80
NAME OF WELLNESS/ACTIVITY TEACHER	YES	NAME OF GRIEVANCE/COMPLAINT REDRESSAL OFFICER	SHRI NINU SOPAN RANE
CONTACT NUMBER OF GRIEVANCE/COMPLAINT REDRESSAL OFFICER	7698213636	EMAIL ID OF GRIEVANCE/COMPLAINT REDRESSAL OFFICER	ninusrane@gmail.com
NAME OF HEAD OF SEXUAL HARASSMENT COMMITTEE	SHRI NINU SOPAN RANE	CONTACT NUMBER OF HEAD OF SEXUAL HARASSMENT COMMITTEE	7698213636
EMAIL ID OF HEAD OF SEXUAL HARASSMENT COMMITTEE	ninusrane@gmail.com	NAME OF CONTACT PERSON IN CASE OF EMERGENCY	SHRI NINU SOPAN RANE
CONTACT NUMBER OF CONTACT PERSON IN CASE OF EMERGENCY	7698213636	EMAIL ID OF CONTACT PERSON IN CASE OF EMERGENCY	ninusrane@gmail.com
TOTAL NUMBER OF DOCTORS IN SCHOOL CLINIC	0	TOTAL NUMBER OF NURSES IN SCHOOL CLINIC	1
TOTAL NUMBER OF BEDS IN SCHOOL CLINIC	1	LEVEL OF INVOLVEMENT OF SCHOOL IN CBSE ACTIVITIES	ACTIVE
DO THE TEACHERS GET PROPER GRADE LIKE PGT/TGT AS PER THE CLASSES THEY ARE ENTITLED TO TEACH?	YES	DO THE TEACHERS AND STAFF GET THEIR SALARY WITHIN FIRST WEEK OF THE MONTH?	YES
DOES THE SCHOOL HAS EPF FACILITY FOR STAFF	YES	EPF REGISTRATION NUMBER	0571
MODE OF SALARY PAYMENT	bankpayment	NAME OF BANK WITH SALARY ACCOUNT	UNION BANK
ARE THE SCHOOL ACCOUNTS AUDITED REGULARLY?	YES	PARENT TEACHERS ASSOCIATION AS PER NORMS	YES
ACADEMIC SESSION	APRIL TO MARCH	VACATION PERIOD	MAY TO JUNE
BEST PRACTICES OF SCHOOL			

JNV IS RUN UNDER MINISTRY OF H.R.D. WHERE NO PROVISION TO GET TUITION FEES EXCEPT GEN BOYS ONLY FROM CLASS 9 TO 12

FEE STRUCTURE OF SCHOOL

13121--JAWAHAR NAVODAYA VIDYALAYA SAPUTARA DANG GUJ

Dated : 15/12/2016

CLASS	ADMISSION FEE (in Rupees)	TUITION FEE (in Rupees)	YEARLY DEVELOPMENT CHARGES (in Rupees)	ANNUAL/MONTHLY OTHER CHARGES FOR OTHER FACILITIES (in Rupees)
PRIMARY	0	0	0	0
MIDDLE	0	0	0	0
SECONDARY	0	0	0	0
SENIOR SECONDARY	0	0	0	0

PHOTO OF SCHOOL

13121--JAWAHAR NAVODAYA VIDYALAYA SAPUTARA DANG GUJ
Dated : 06/12/2016

SCHOOL PHOTOS

GEO-TAGGED PHOTO



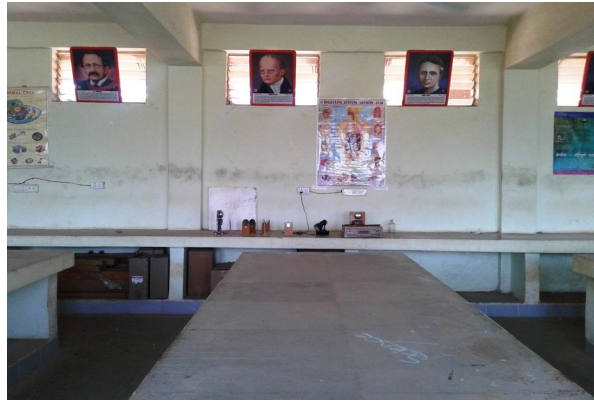
PLAYGROUND PHOTO



LIBRARY PHOTO



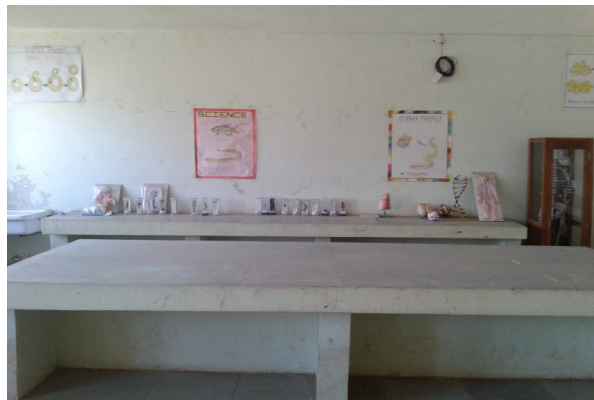
SCIENCE LAB PHOTO



PHYSICS LAB PHOTO



CHEMISTRY LAB PHOTO



BIOLOGY LAB PHOTO



